

CONTROL BOX CB8-T

Features:

- Connection of max. 2 actuators, type LA12, LA22, LA28, LA28S, LA30L or LA32 via jack plug in the control box
- Extremely compact design
- Mains voltage: 220-240/120/100 V AC 50-60 Hz
- Duty cycle: Max. 5% or 1 min. in use and 19 minutes not in use (valid for 1 actuator at a time)
- Output voltage 24 V DC
- Ambient temperature +5°C to +40°C
- Standard protection class: IP 51
- Colour: black
- 8 pin DIN-socket for handset
- 3.2 m straight mains cable
- Electronic overload protection (EOP) prevents overload of the actuator

Options:

- Protection class: IP 65 or IP 66.
- 0.6 m coiled mains cable
- Colour: grey

TECHLINE™
IMPROVING FLEXIBILITY



The CB8-T is developed for use with LINAK A/S' actuators and handsets. The control box can operate up to 2 actuators individually.

The simple compact design combined with high quality makes the control box ideal for use with beds, chairs, tables and many other applications.

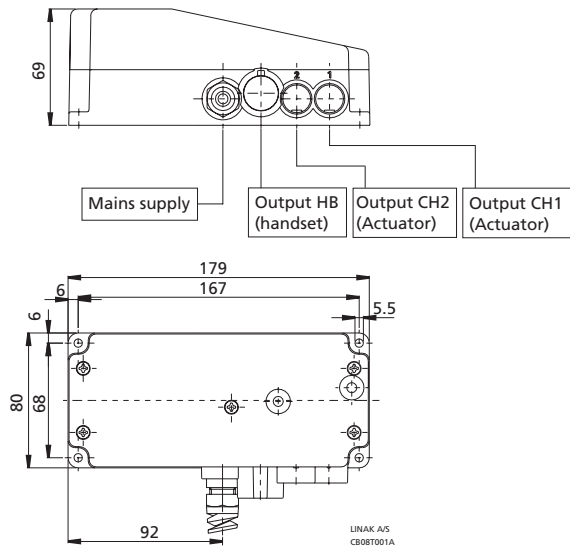
Important: individual current cut-off:

The current to each actuator is monitored and when this reaches a specified value, the current to that actuator is cut-off.

As the actuators do not have the same current consumption the cut-off values must also be different. Therefore it must be specified which actuator is to be connected to which channel:

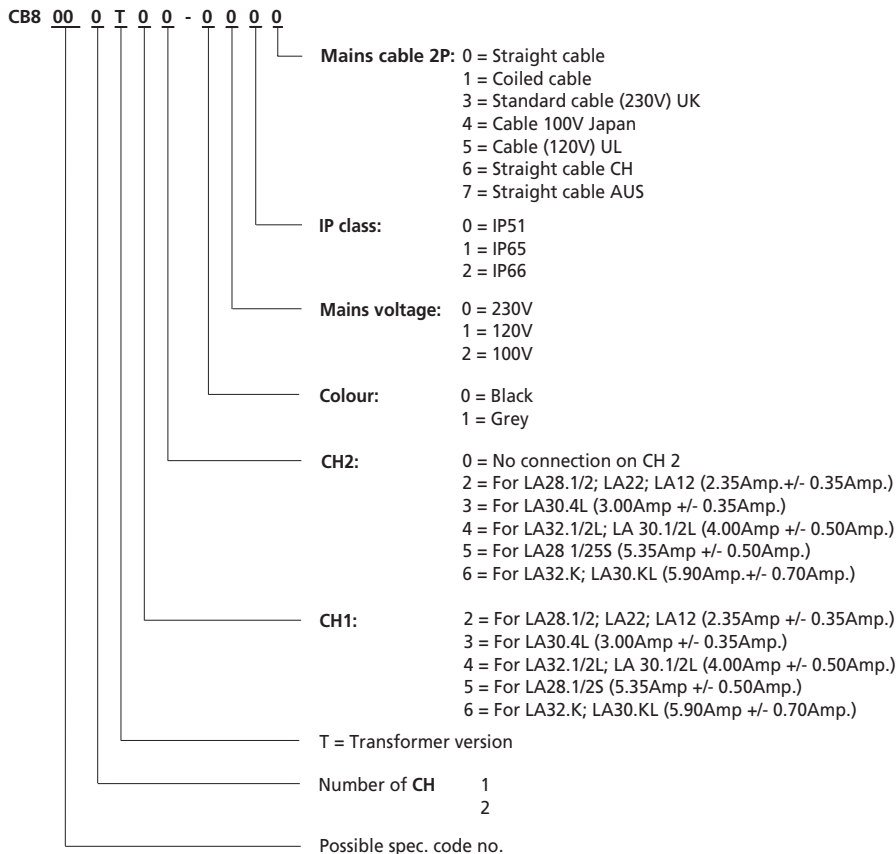
| TYPE | CURRENT CUT-OFF (A) |
|-----------------------|-----------------------|
| LA12, LA22, LA28 | 2A (2.35 +/- 0.35Amp) |
| LA30.4L | 3A (3.00 +/- 0.35Amp) |
| LA30.1/2L /LA32.1/2 | 4A (4.00 +/- 0.50Amp) |
| LA28.S | 5A (5.35 +/- 0.50Amp) |
| LA30.KL/ LA32.K/LA32F | 6A (5.90 +/- 0.70Amp) |

CB8-2T



CB8T

Ordering example:



General information:

- The current measurement is individual for each channel, but if the total current consumption reaches 8 Amp, then the CB cuts off the current. The CB and the actuator are therefore also protected by a common current measurement.
- When using LA22 max. thrust reduced by ca. 25 %.

Specifications subject to change without prior notice.
It is the responsibility of the product user to determine the suitability of LINAK A/S products for a specific application. LINAK will at point of delivery replace/repair defective products covered by the warranty if promptly returned to the factory. No liability is assumed beyond such replacement/repair.